



KNOWLEDGE SHARING PROGRAM



Ministry of Economy
and Finance



Korea Development
Institute



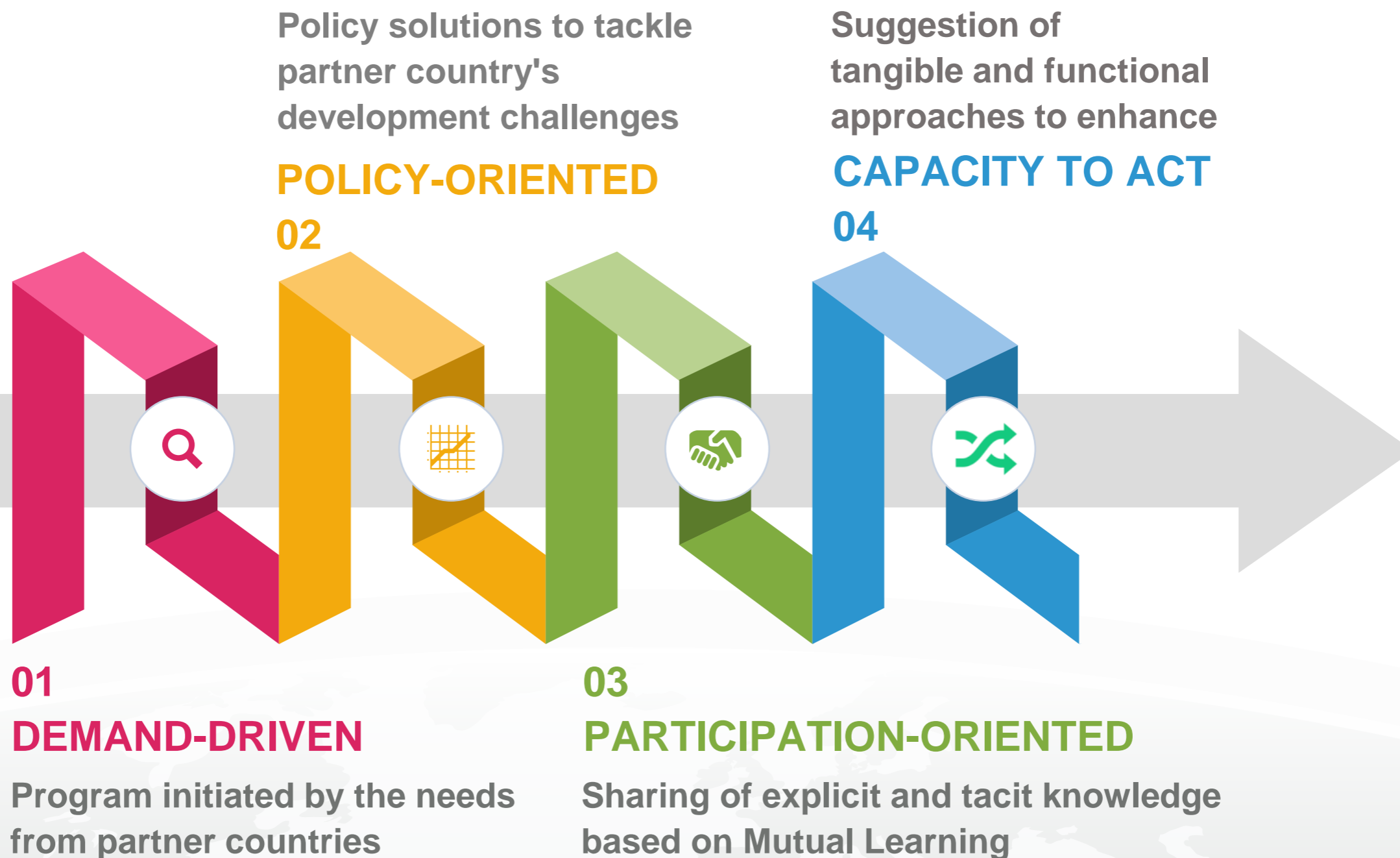
What is KSP?

KSP is a knowledge-intensive **development cooperation program** that seeks to offer **customized consultations** on partner countries' development challenges by drawing on **Korea's experiences** and global best practices.





Characteristics of KSP





Key Activities

Policy Research

Identify the partner country's current policy issues; analyze the problem within local contexts and from a global perspective; and provide recommendations to improve policy design and implementation.

Policy Practitioner's Capacity Building

Invite partner countries' government officials and private-sector experts to Korea; and organize workshops and on-site visits for capacity building and networking.

High-Level Policy Dialogue

Communicate the major research findings to top policymakers; collect their opinions; and secure the leadership for effective implementation of the recommendations.

Dissemination

Hold dissemination seminars in the partner country for local policymakers, experts, businesses and other stakeholders.

Monitoring & Evaluation

Follow up the implementation and size up the outcome and impact.



85 Partner Countries & 9 International Organizations



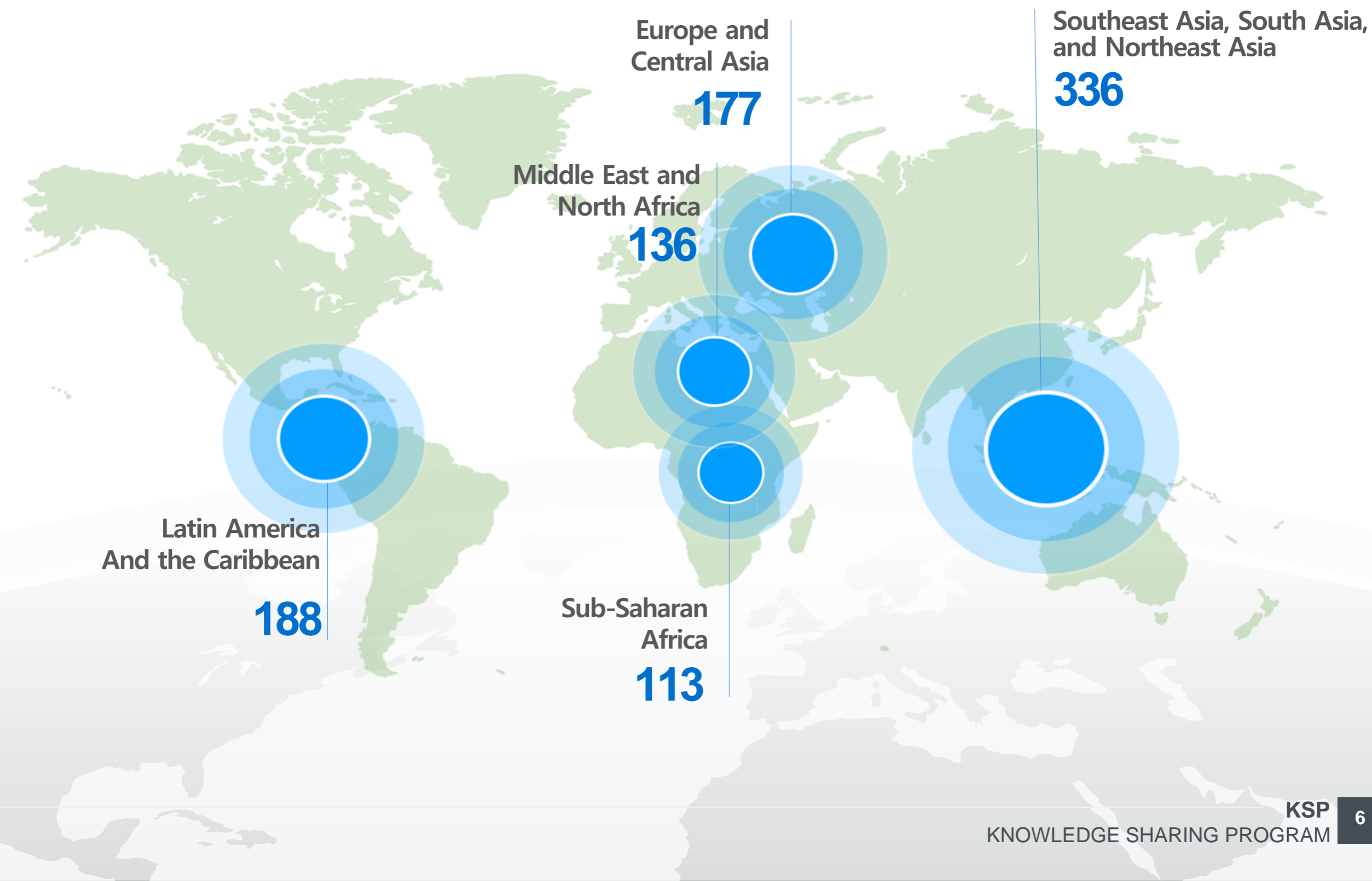
Countries 
IOs 





Global Networks of KSP

The number of the project by region





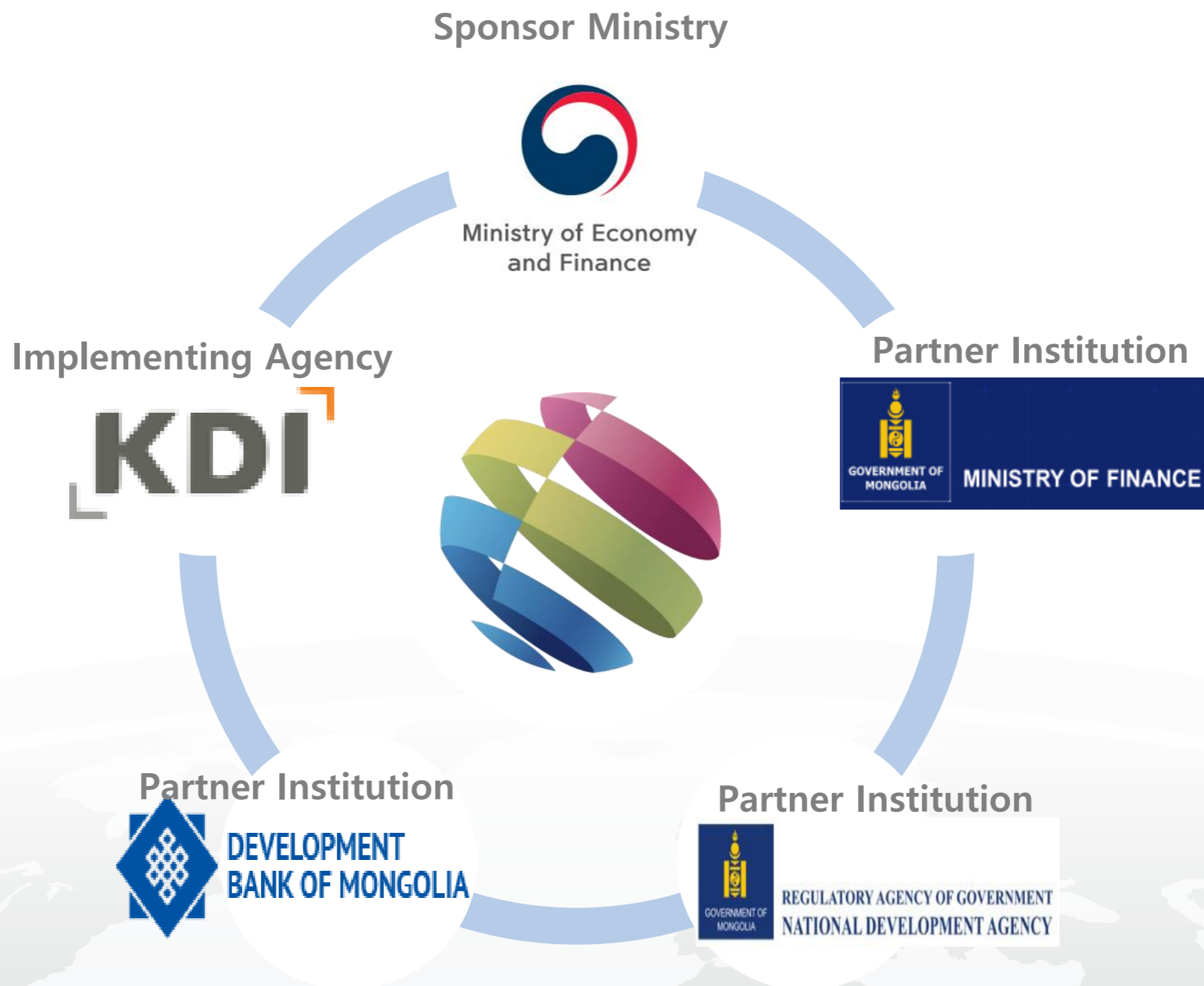
Since its launch in 2010, KSP with Mongolia has provided policy consultations on 20 topics.

The topics and partner institution for 2018/19 KSP with Mongolia are as follows:

	Topic	Partner Institution
2018/19 KSP with Mongolia (I)	Economic Development Planning and Project Performance Assessments	Ministry of Finance National Development Agency Development Bank of Mongolia
2018/19 KSP with Mongolia (II)	Development of Smart aero-city next to the NUBIA at Khoshig Valley	Ministry of Construction and Urban Development



2018/19 KSP with Mongolia: Project Stakeholder





2018/19 KSP with Mongolia: Topics

Senior Advisor: Seok Dong Kim (Former Chairman of Financial Services Commission)

Principal Investigator: Professor Myungho Park

Program Manager: Dr. Chang Jae Lee (KDI)

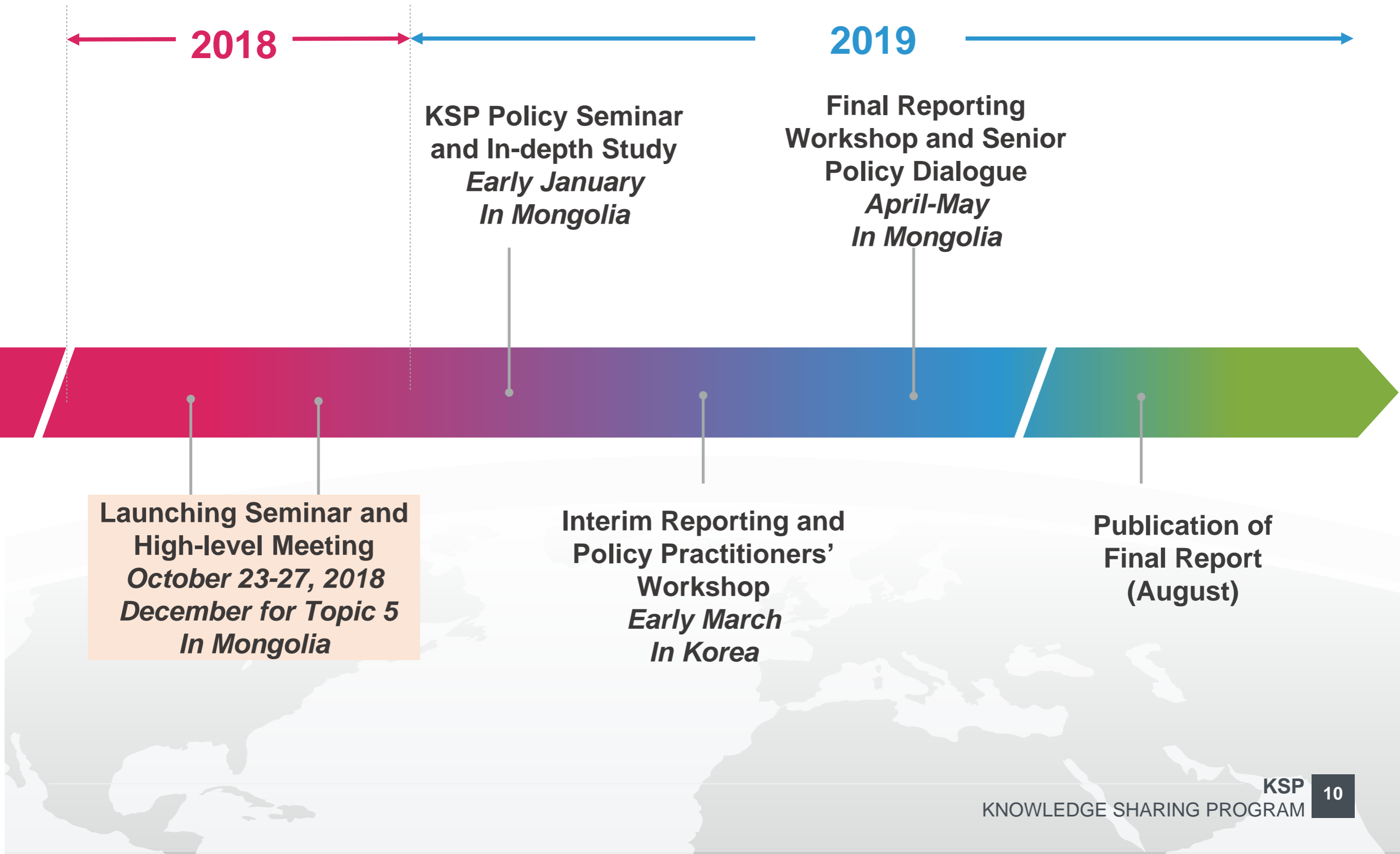
Program Officer: Jin Ha Yoo (KDI)

	Topic*	Partner Institutions	Korean Researchers	Local Consultant
1	Proper Institutional set-up and governance for integrated development planning	Ministry of Finance	Prof Myungho PARK (Hankuk University of Foreign Studies)	TBD
2	Policy Prioritization across sectors	National Development Agency	Prof Sung Ho CHOI (Gyeonggi University)	
3	Integration of policy planning and budgeting strategies	Ministry of Finance	Prof Changyong CHOI (KDI School of Public Policy and Management)	
4	Developing project readiness assessment and due diligence methodology and its application for DBM AMC	Development Bank of Mongolia	Prof Jongyearn LEE (KDI School of Public Policy and Management)	
5	Support for the project financing mechanism and investment fund operations	Development Bank of Mongolia	Prof Younghan LEE (University of Seoul)/ Dr. Takkyung KIM (Korea Development Institute)	

* Titles of the topics could be adjusted and finalized through discussions between Korean experts and the Mongolian counterparts.



2018/19 KSP with Mongolia: Tentative Schedule





THANK YOU

